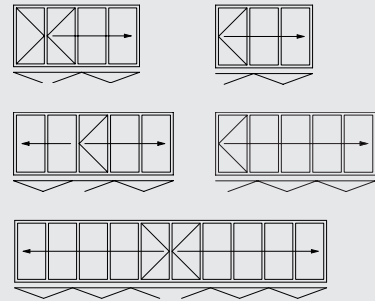


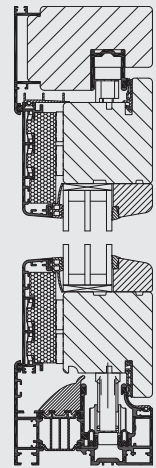
## FLOOR TRACKS



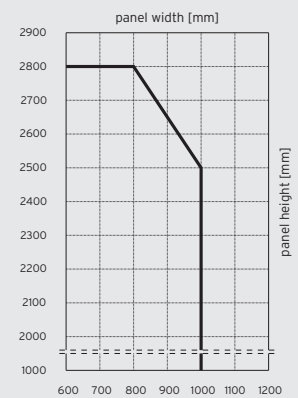
## CONFIGURATION VARIANTS



## VERTICAL SECTION



## PANEL SIZE CHART



— valid for panels with fillings and glasses with a weight of max. 40 kg/m<sup>2</sup>

## VARIANTS

- Available as floor-mounted or top-hung folding glass door
- Panels can be ordered to open either internally or externally, to the left and/or right

## PROFILE SYSTEM

- 96 mm element thickness
- Thermally insulated wood / aluminium profiles: laminated panel frames made of wood with technical slot-pin-connection on the inside and aluminium cover as weather protection on the outside and also an insulation level in between
- Sealing against wind and rain by triple wraparound seal
- Spruce or pine wood (standard); alternatively, other woods are available
- Wood from sustainable forestry (optional)

## FITTINGS

- No protruding runner and guide tracks
- Concealed fittings for one-handed operation
- Lockable in any partly open position

## GLAZING

- Triple heat-insulating glass as standard
- $U_g = 0,7 \text{ W/m}^2\text{K}$  with 3 x 4 mm float glass
- Glass thickness from 24 to 46 mm available

## FINISH

- Vented aluminium cladding on the outside: Powder coating to RAL or anodised aluminium according to EURAS
- Wood finish according to SL colour chart: environment-friendly water-based lacquers

## U-VALUE

- $U_w = 0,80 \text{ W/m}^2\text{K}$  ( $U_g = 0,5 \text{ W/m}^2\text{K}$ , insulated seldge) according to DIN EN ISO 10077 on the basis of a three-panel folding glass door, WxH 2700 x 2300 mm

## MAXIMUM PANEL SIZES

- 1000 x 2500 mm
- 800 x 2800 mm
- Panel weight up to 100 kg
- Special sizes on request



www.solarlux.com

567021092-900 | 032016 | Subject to technical changes



FOLDING GLASS DOOR  
SL 97

 **SOLARLUX**<sup>®</sup>  
glass in motion

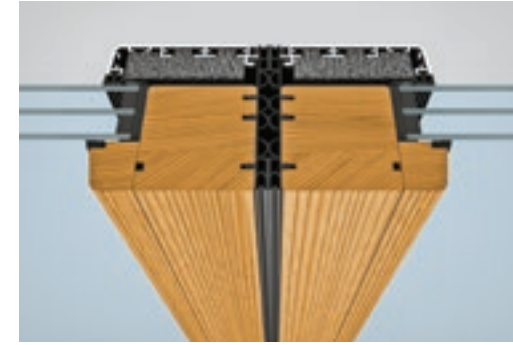
 **SOLARLUX**<sup>®</sup>





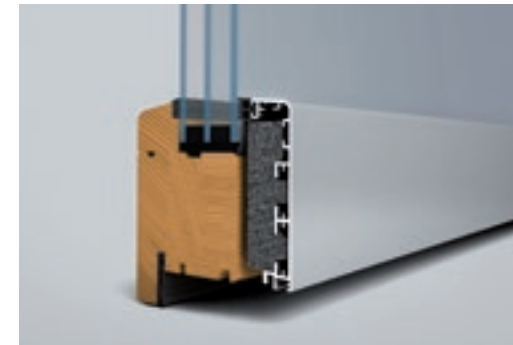
#### HEAT INSULATION

High quality woods with an additional level of insulation and triple glazing provide a higher than average heat insulation according to EnEV (energy saving regulations). The panels achieve a U-value of  $U_w \leq 0.80 \text{ Wm}^2\text{K}$ .



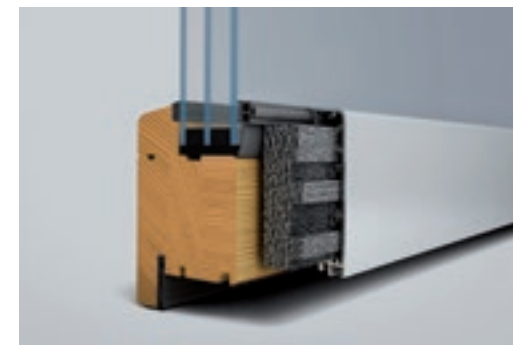
#### WEATHER PROTECTION

Aluminium cladding on the outside provide high weather protection and minimize the time of maintenance.



#### SUSTAINABILITY

Certified woods from sustainable forests are available as an optional extra. All components are tested to be environmental-friendly and are mechanically connected to each other which means they can be separated easily for recycling.



#### COMFORT

A wooden interior finish creates a comfortable and warm atmosphere. A wide range of wood colours provide exclusive design variants.



#### ENGINEERED

Long-lasting stainless steel runners and tracks ensure easy, quiet and smooth operation of the folding glass doors.



#### STABILITY

Espagnolettes with 24 mm throw lock the panels into the top and bottom track of the frame ensuring they withstand gales and afford high security.



#### SECURITY

The integrated multi-point locking system and the comfortable door handle with catch bolt, lock and profile cylinder ensure high security.



#### WIDTH ADJUSTMENT

Even after installation the folding glass door can be easily width-adjusted by a movable hinge.

