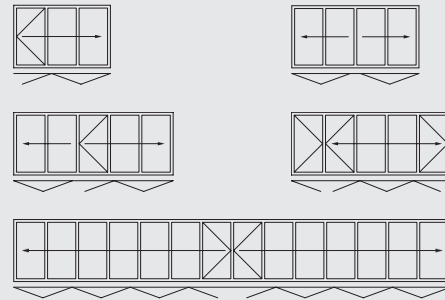


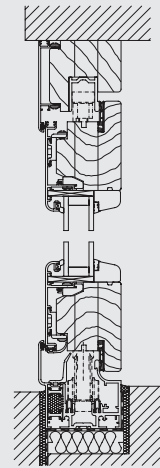
FLOOR TRACKS



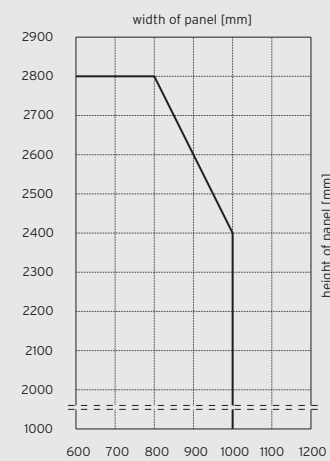
CONFIGURATION VARIANTS



VERTICAL SECTION



PANEL SIZE CHART



VARIANTS

- ▮ Floor mounted or top-hung folding glass door
- ▮ Panels can be ordered to open either internally or externally, to the left and/or right

PROFILE SYSTEM

- ▮ 66 mm panel thickness
- ▮ Slim frame and panel profiles (panel joint 169 mm)
- ▮ Heat-insulated wood/aluminium profile system: laminated wood panel frames with technical solid mortice and tenon joints on the inside and protecting aluminium cladding profiles on the outside
- ▮ Double wraparound seal protects from wind and rain
- ▮ Wood from sustainably sourced forests are also available

WINDOW/DOOR SYSTEM

- ▮ Can be combined with SL 68HA standard window systems: Tilt and turn, fixed units, PSK etc.

FITTINGS

- ▮ No protruding runner and guide tracks
- ▮ Concealed fittings for one-handed operation
- ▮ Lockable in any partly open position

GLAZING

- ▮ Heat-insulating glass as standard
- ▮ $U_g = 1,1 \text{ W/m}^2\text{K}$ with 2 x 4 mm toughened glass
- ▮ Maximum glazing depth 26 – 32 mm

SURFACE FINISH

- ▮ Wood finish according to SL colour chart: ecologically friendly water-based lacquer
- ▮ Aluminium cladding profile: Powder coated according to RAL or Eloxal according to EURAS

U-VALUE

- ▮ $U_w = 1,3 \text{ W/m}^2\text{K}$ ($U_g = 0,7 \text{ W/m}^2\text{K}$, insulated seldedge) according to EN ISO 10077 on the basis of a three panel folding glass door, WxH 2700 x 2300 mm

MAXIMUM PANEL SIZES

- ▮ 1000 x 2400 mm
- ▮ 800 x 2800 mm
- ▮ Panel weight up to 70 kg
- ▮ Special sizes on request

TESTED FOR

- ▮ Ventilation Class 3 to EN 12 207
- ▮ Impermeability to rain Class 9A to EN 12 208 (corresponds to test group C according to EN 18 055)



5670209-900 / 1/2014 / subject to technical changes



WOOD/ALUMINIUM
FOLDING GLASS DOOR
SL 67



SAFE OPERATION

The entry / exit panel (in the case of an odd number of panels) can be secured by means of a special catch and can be carried along safely with the moving façade.



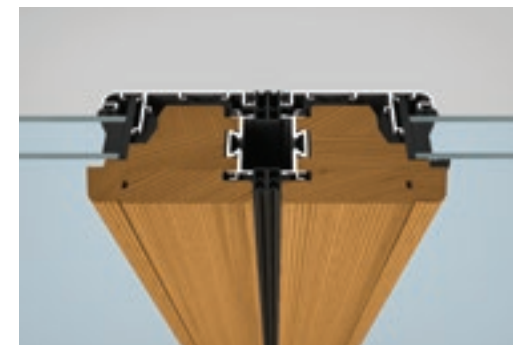
ENGINEERED

Stainless steel runners and tracks ensure effortless sliding action of the folding glass door. Easy to open and to close.



HEAT INSULATION

High-quality wood offers the best heat insulation according to the latest energy conservation regulations (EnEV).



EASE

Natural wood on the inside creates a warm and natural atmosphere. Alternatively the wood can be supplied from certified sustainable forestry. A wide variety of colours are available creating exciting design possibilities.



SECURITY AND COMFORT

The integrated multipoint locking system and the comfortable door handle with catch bolt, lock and profile cylinder ensure high security.



WEATHERPROOF

Vented aluminium cladding on the outside afford the best weather protection whilst minimising external maintenance.



STABILITY

24 mm throwbolts provide additional stability to the system and also increase security.



WIDTH ADJUSTMENT

Small adjustments to the width of the panels can be made by adjusting the hinges with a screwdriver.

